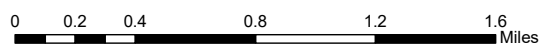
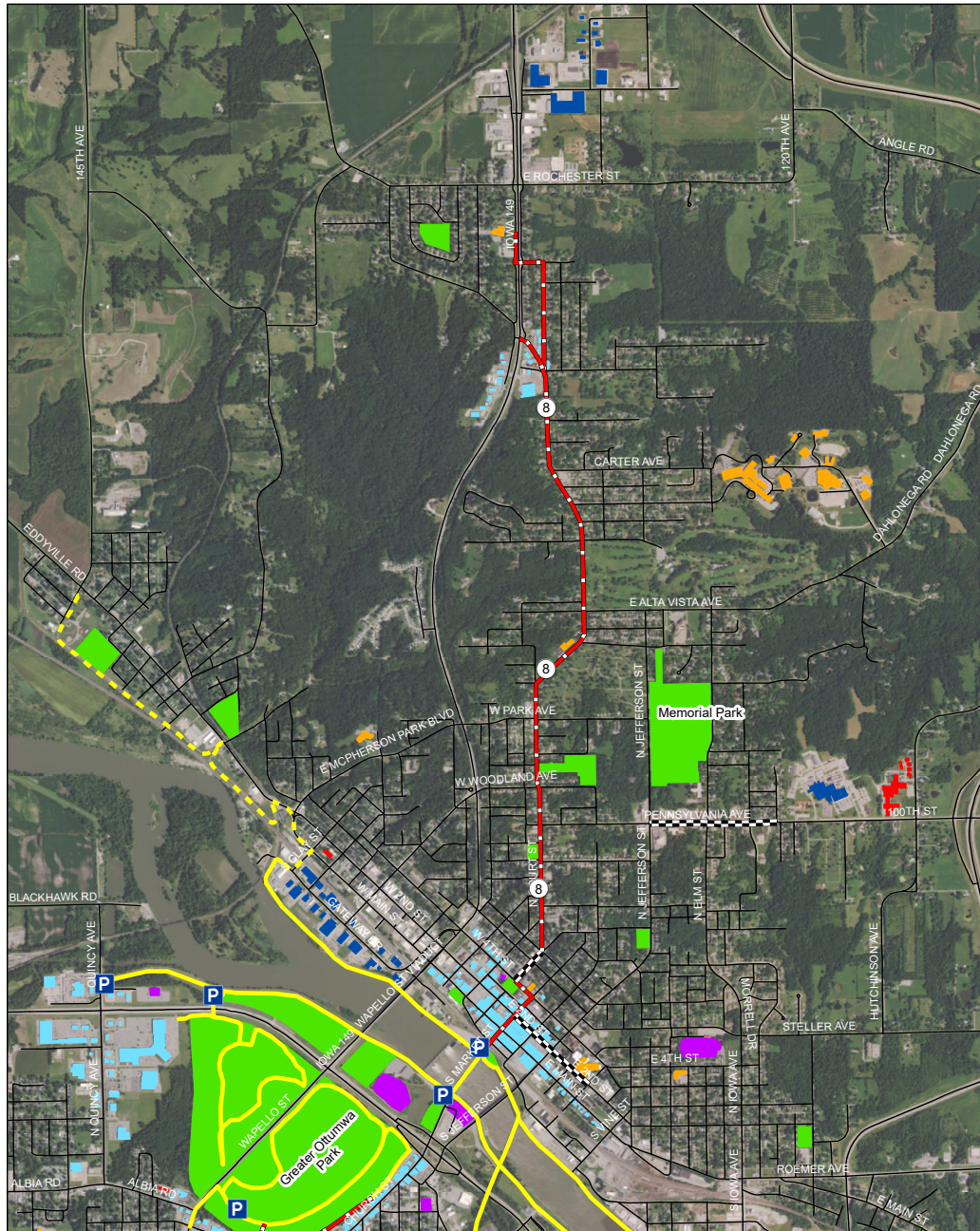
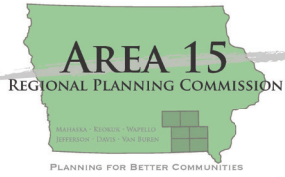


Priority 1 Corridors - North Side



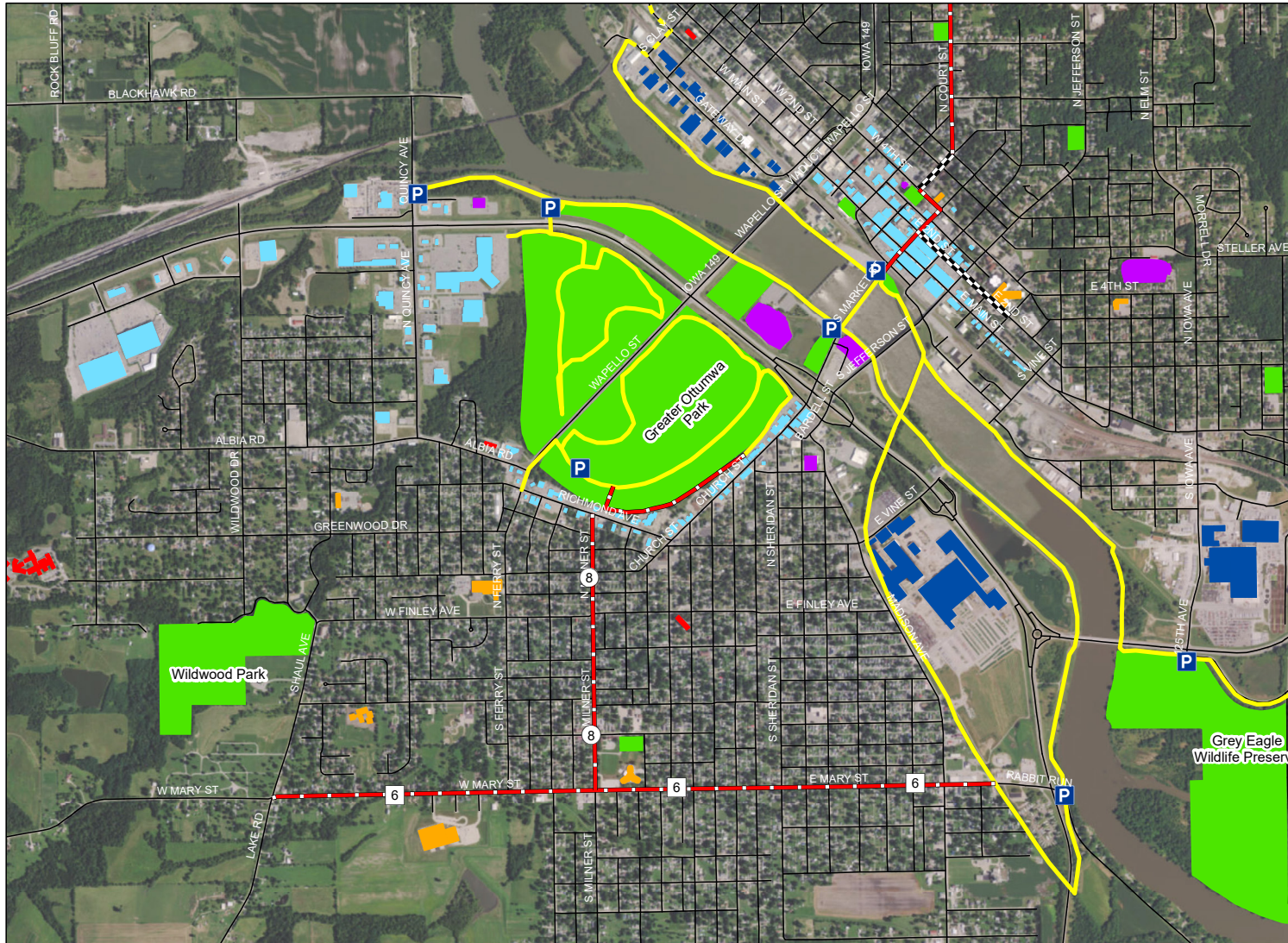
Map prepared by the Area 15
Regional Planning Commission
Sources: ESRI, Iowa DOT,
Wapello County GIS, Wapello
County Trails Council.
Date prepared: 06-01-17



Ottumwa Bicycle and Pedestrian Plan

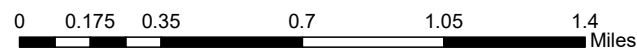
Pathways to Healthy Neighborhoods

Priority 1 Corridors - South Side



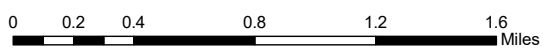
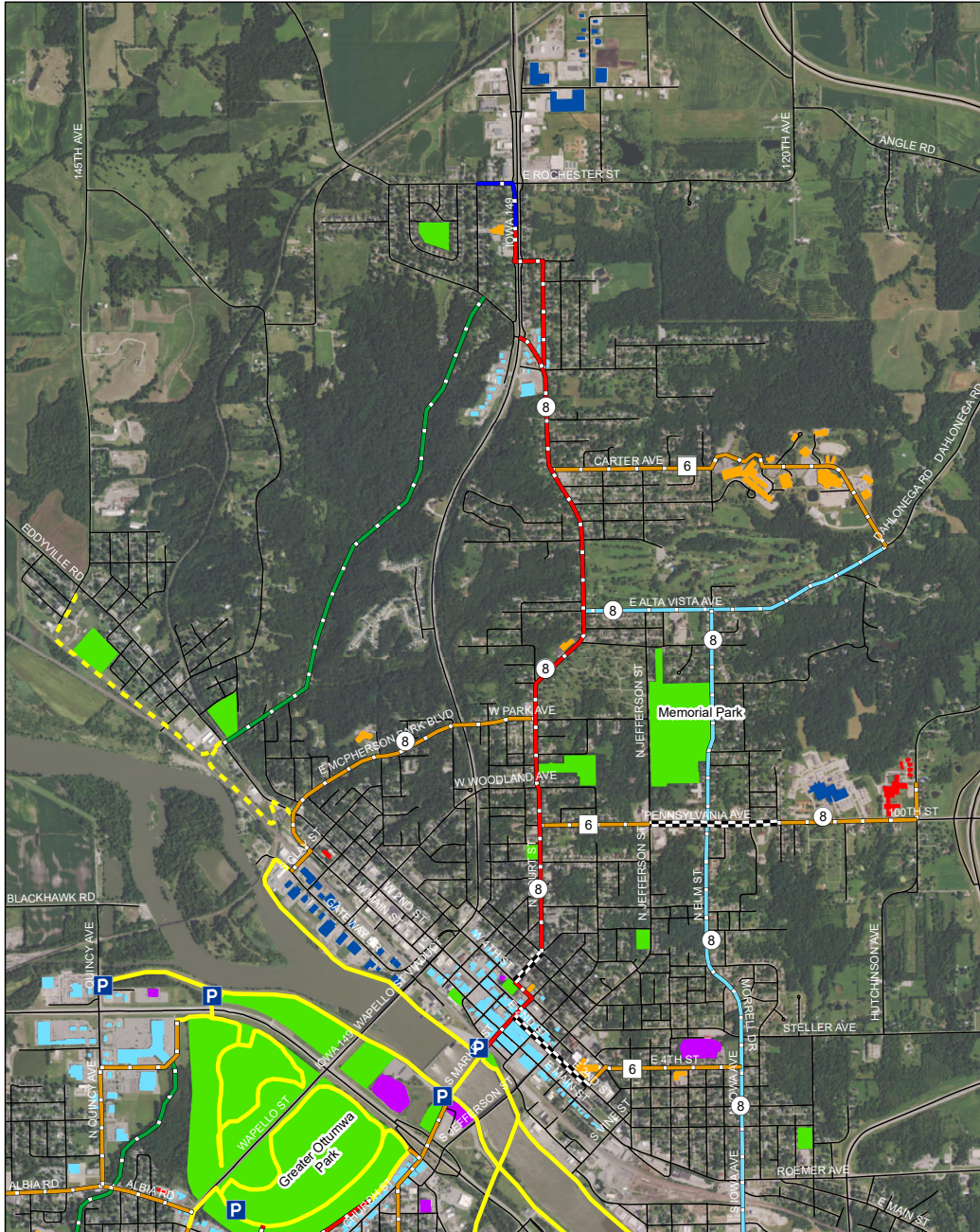
Legend

- Trailheads/Parking
- 8ft Sideway
- 6ft Sideway
- Priority 1 corridor
- Existing corridor
- Existing Trails
- Proposed Trails
- High Density Housing
- Major Employers
- Schools
- Destinations
- Major Commercial Areas
- Parks



Map prepared by the Area 15 Regional Planning Commission
Sources: ESRI, Iowa DOT, Wapello County GIS, Wapello County Trails Council.
Date prepared: 06-01-17

All Corridors - North Side



Legend					
	Existing Trails		Priority 3 Corridor		Destinations
	Proposed Trails		Priority 4 Corridor		Major Commercial Areas
	Trailheads/Parking		Scenic Corridor		Major Employers
	8ft Sidewalk		Existing Corridor		High Density Housing
	6ft Sidewalk		Parks		Schools
	Priority 1 Corridor				
	Priority 2 Corridor				

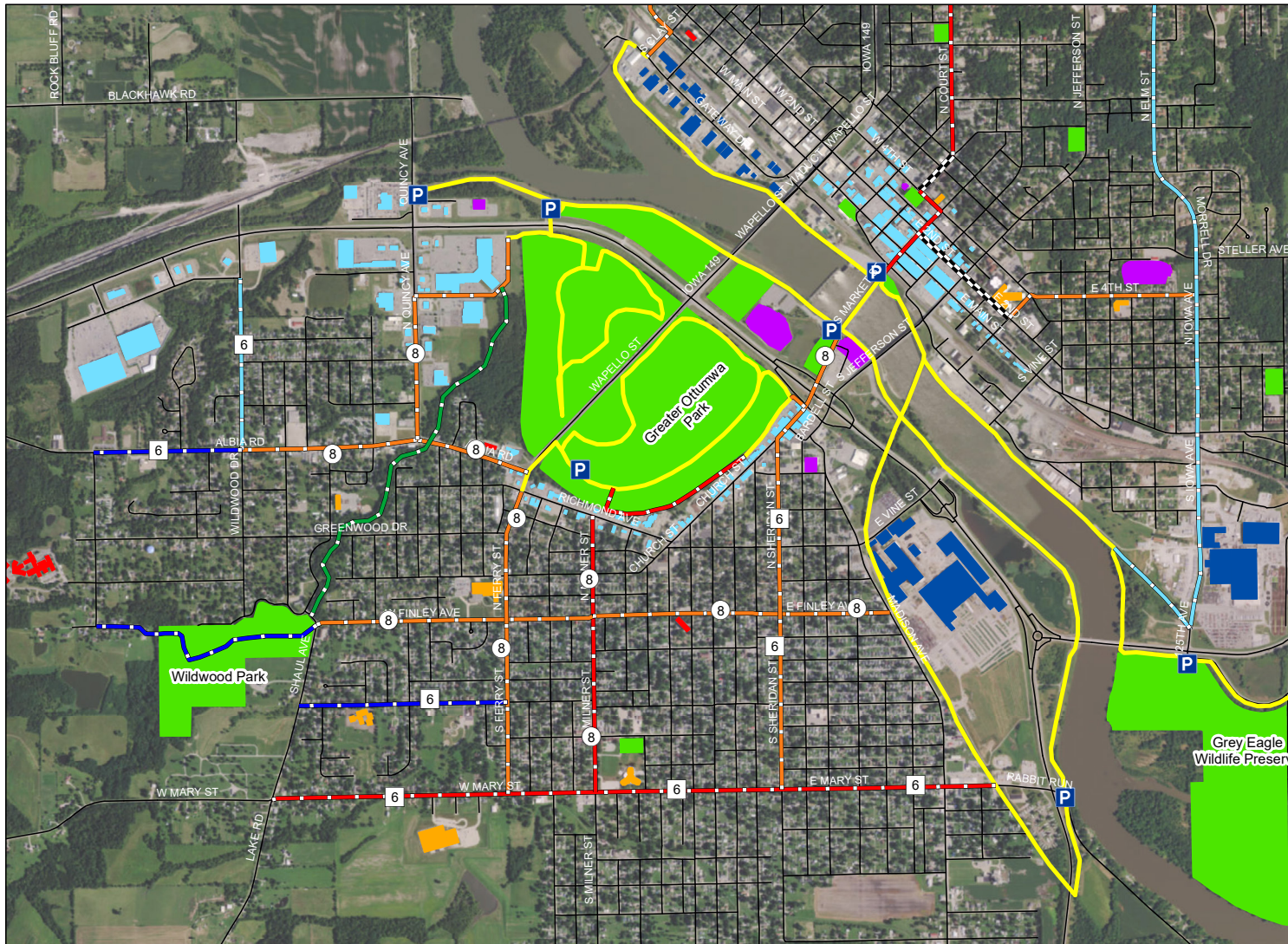


Map prepared by the Area 15
Regional Planning Commission
Sources: ESRI, Iowa DOT,
Wapello County GIS, Wapello
County Trails Council.
Date prepared: 06-01-17

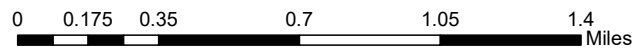
Ottumwa Bicycle and Pedestrian Plan

Pathways to Healthy Neighborhoods

All Corridors - South Side



- Legend**
- P Trailheads/Parking
 - 8 8ft Sidewalk
 - 6 6ft Sidewalk
 - Scenic Corridor
 - Priority 1 corridor
 - Priority 2 Corridor
 - Priority 3 Corridor
 - Priority 4 Corridor
 - Existing corridor
 - Existing Trails
 - Proposed Trails
 - High Density Housing
 - Major Employers
 - Schools
 - Destinations
 - Major Commercial Areas
 - Parks



Map prepared by the Area 15 Regional Planning Commission
Sources: ESRI, Iowa DOT, Wapello County GIS, Wapello County Trails Council.
Date prepared: 06-01-17